

SCHOLASTIC No. 3

57/116



The 6 - STAVE

SCHOLASTIC

INTERLEAVED

MANUSCRIPT
MUSIC BOOK



Arch



- 10 Mrs Coburns Reel 1
- 14 Straglass Horse - 4
- 16 Sons of Gray
- The Deers of the Weems 5
- 12 The Kettle has been bandied 6
- 9 The Bridge of Narnon 8 R Bremner
- Am well of Edinb^g second collection of
- 13 New Town of Edinb^g 2 Sets Reel - Country Dances
- Ross House 3
- 8 Lady Betty Hay's Reel - 7
- Croagh Patrick 9

1-8 1st Couple cash off 1 and hands 4 with 3rd couple next round.

9-16 " " up 1 " " " 2nd " " " "

17-20 They ~~cross over~~ lead down cross over below 3rd couple ^{dance} lead up to the top out

21-24 They ~~lead~~ call the 1st - call off to corners

25-32 They turn corners & partners

33-40 Reel of 3 on floor with corners

41-48 Reel of 3 on room side of dance -

1st Couple call of one on hands round 4 with 3rd C. call up. hands round 4 with 2nd C

cross over 2 lead up to the top part of - call off. turn corner at hands &

partner with left. At the corners the same. They exchange sides then on one side

Miss Cahoon's Reel

The first system of handwritten musical notation consists of two staves. The upper staff is in treble clef with a key signature of one flat (B-flat) and a time signature of 6/8. It contains a melodic line with eighth and sixteenth notes, including some beamed sixteenth notes. The lower staff is in bass clef with a common time signature (C) and contains a bass line with quarter and eighth notes. There are some handwritten annotations, including a small 'x' in the first measure of the upper staff and a '+' in the second measure of the lower staff.

The second system of handwritten musical notation consists of two staves. The upper staff is in treble clef with a key signature of one flat (B-flat) and a time signature of 6/8. It features a melodic line with eighth and sixteenth notes, including some beamed sixteenth notes. The lower staff is in bass clef with a common time signature (C) and contains a bass line with quarter and eighth notes. There are some handwritten annotations, including a '2' above the second measure of the upper staff and a '3' above the fourth measure of the upper staff. There are also some '+' signs in the lower staff.

The third system of handwritten musical notation consists of two staves. The upper staff is in treble clef with a key signature of one flat (B-flat) and a time signature of 6/8. It contains a melodic line with eighth and sixteenth notes, including some beamed sixteenth notes. The lower staff is in bass clef with a common time signature (C) and contains a bass line with quarter and eighth notes. There are some handwritten annotations, including a '+' in the first measure of the upper staff and a '+' in the first measure of the lower staff.

Handwritten musical notation, first system. The upper staff is in treble clef with a key signature of two sharps (F# and C#) and a common time signature (C). The lower staff is in bass clef with a common time signature (C). The music consists of several measures of complex, multi-measure passages.

Handwritten musical notation, second system. The upper staff is in treble clef with a key signature of two sharps (F# and C#) and a common time signature (C). The lower staff is in bass clef with a common time signature (C). The music consists of several measures of complex, multi-measure passages.

Handwritten musical notation, third system. The upper staff is in treble clef with a key signature of two sharps (F# and C#) and a common time signature (C). The lower staff is in bass clef with a common time signature (C). The music consists of several measures of complex, multi-measure passages.

- 1-8 1st - 2nd cople ~~for~~ set & change side set - change back again
- 9-12 " " " set & ~~right~~ 4 hands across $\frac{1}{2}$ round - right hand
- 13-16 " " " " " " left hand
- 17-24 1st cople lead down centre for 2 steps & set. lead up for cast off.
- 25-32 1st - 3rd cople 4 hands ~~right~~ round. set
- 33-40 1st 2nd cople right. left ~~right~~ & lead back

The 1st 2nd cople for d & change side. - then same back again: for d. all
 four R's leads across: for d & left hand back again: - lead down 2 cople
 for d to your partner - lead up & M's for d. cast off. Hand round
 & with 3rd cople right. left & left

Yes

Ross House

1-8. 1st cable set east of 2 set - east up again

9-16 . . . lead down through 3rd cable cross on ^{lead?} east up to top & east of
to corners

17-24 Set - turn corners

25-32 Advance - secure - ^{limb parties -} ~~then run~~ to run side 1 place down

1st cable set east of 2 cables, set east, east up again. Cross on
2 cables. lead to top and east of. set to corner & then. lead
on grades & turn.

- 1-8 1st angle cut off 2 lead up to the top. cut off 1 to corner
 9-16 set to all the corners (Cross corners) ?
 17-20 to corner. patching finish between on corners
 25-32 Advan. side. to patch to one side

cut of two in :- lead up to the top. cut off. set cross
 corner. damp corner. damp patching. lead out side

Bremner's 2nd collection

Tune "Old man ill mervardie". Stewart 67

Ross House

1-8. 1st cable set east of 2 set - east up again

9-16 . . . lead down through 3rd cable cross over ^{lead?} east up to top & cast off
to corners

17-24 Set - turn corners

25-32 Advance - release ^{the painter} ~~the~~ to run side 1/2 way down

1st cable set east of 2 cables, full set, east up again. Cross over
2 cables. lead to top and cast off. set to corners & turn. lead
at sides & turn.

Bridge of Kaur

8

- 1-8 1st angle cut off 2 lead up to the top. cut off 1 to corner
 9-16 set to all the corners (Cross corners) ?
 17-20 two corners. position finish between on corners
 25-32 Advance. side. two parts from side

cut of two in :- lead up to the top. cut off. set cross
 corner drop corner. drop position. lead out side

Bremner's 2nd collection

Tune "Old man ill meredie". Stewart 67.

Ross House

- 8. 1st cable set east of 2 set - east up again
16 . . . lead down through 3rd cable cross over ^{lead?} east up to top & cast off
to corners

- 24 Set - turn corners

- 32 Advance. secure ^{humbolts} ~~to~~ run side 1/2 way down

1st cable set east of 2 cable, full set, east up again. Cross over
2 cable. ~~lead~~ lead to top and cast off. set to corners & turn. lead
at poles & turn.

Croagh Patrick.

1-4. 1st couple cast off:

5-8 1 + 3rd couples 4 head ^{eyes} round.

9-12. 1st couple cast up.

13-16 1st - 2nd couples 4 head right round.

17-24 1st couple down the middle - of cast at the same place

25-32 height. left

across or round?

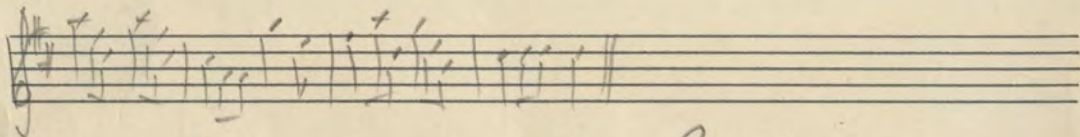
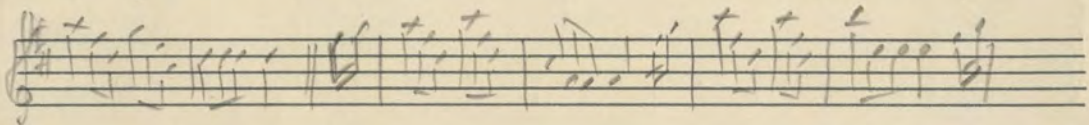
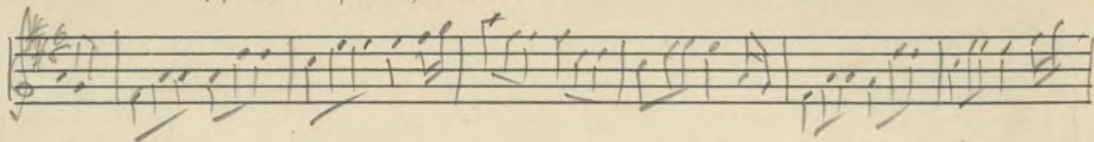
Cast of one An from head at bottom - cast up 4
head at top - head down the middle. up eyes
cast off: - eyes left at top

Croagh Patrick

The first system of handwritten musical notation consists of two staves. The top staff is in treble clef with a key signature of one sharp (F#) and a time signature of 6/8. The bottom staff is in bass clef with the same key signature and time signature. The music features a melody in the treble staff with several measures marked with a '+' sign above the notes. The bass staff provides a simple accompaniment.

The second system of handwritten musical notation consists of two staves. The top staff is in treble clef with a key signature of one sharp (F#) and a time signature of 6/8. The bottom staff is in bass clef with the same key signature and time signature. The melody in the treble staff continues, with a series of notes marked with '+' signs. The bass staff continues with its accompaniment.

The third system of handwritten musical notation consists of two staves. The top staff is in treble clef with a key signature of one sharp (F#) and a time signature of 6/8. The bottom staff is in bass clef with the same key signature and time signature. The melody in the treble staff concludes with a double bar line. The bass staff continues with its accompaniment.



1st & 2nd C₄ set - change side - R hand across
 Repeat - back ~~in hand~~ the same again - left hand across
 lead down the middle - up again - last 9. Hands 4 at
 bottom - right. left at top

Bars 1-4 15. 2nd couple set & cross over
 5-8 Right hands across right hand
 9-16 Repeat Grip left hands across

Yes

17. 24 15th couple down the middle - up last 9 of 2nd place
 25. 32 15th couple 4 hands round. back into 2nd couple
 33. 40 2nd couple Right. left

Deil among the Tailors

- Bars 1-2 1st . 2nd couples set.
3-4 For hand across half round -
5-8 Repeat back to places
9-16 1st C. Down tho. middle . up again
17-24 1st . 2nd couples Allemande
25-32 1st 2nd 3rd couples 6 hands round . back.

Davies Occasional Collection of Popular Dances.

Broughty Ferry Castle Reel

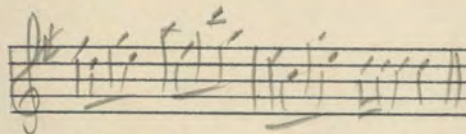
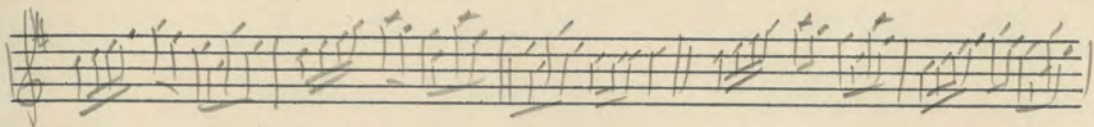
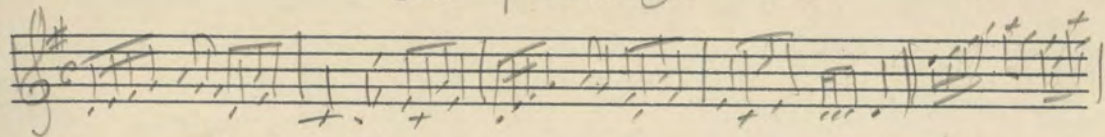
- 1-4 1st couple turn by st hand - section to place
- 5-8 " " left " "
- 9-16 1 " down the middle - up of -
- 17-20 1st man sch to 2nd woman & turn her to stand on high
- 21-24 1st wr " ma " left
- 25-28 1/2 lady claim back to own partner
- 29-32 Half sh - left
- 33-40 Prosects

1/2

X

Duke of Routhmchs Head

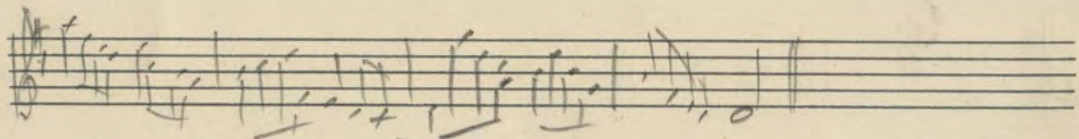
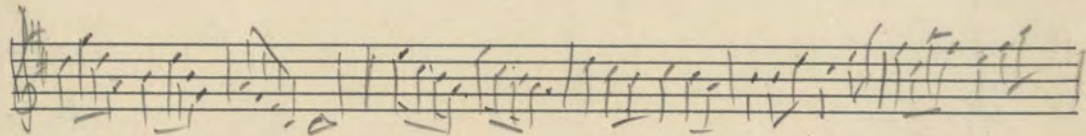
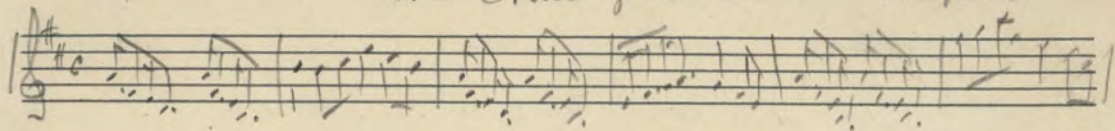
Skeller



Foot it a cast of 2 Cu the some up again fall in at
 top. bottom - set all to the same in the sides
 they contrary sides & turn you partner at the 2nd Cast
 place

- 1-8 (1st set) - cast of 2 set - cast up finish in 3rd down dance
 9-12 All set time - the turn off side
 13-16 all set a time again
 17-20 cast of 3 on the sides

Capt. Macbride's Bonny Kate galop - Rhythm



Key C major side Then key F# on side
 Cross over 2nd bar - lead of the middle - end of
 Hands 6 and. right - left at the top.

Yes

- 1-8 1st cycle down key of 3 on left side
- 9-16 2nd cycle on the right
- 17-24 3rd cycle end with the middle and 9th or 2nd place
- 25-32 6 bars end
- 33-40 Right - left 1 step & on the hand

Swimmers Reel.

- 1-4 1st couple turn by the head (set in & place)
- 5-8 1st man turn 2nd man with left hand 1st woman does do with 2nd man
- 9-16 down the Circle all four - up.
- 17-24 Wheel - back
- 25-32 Pouselle

Capt MacBean's Reel

Chorus ^{Capl. G. L.} 1760?

Yes 1st couple half fil ^{down} on ^{their} sides - turn - the same up again and turn.

falling down - up - cast off. Right hand - left

- 1-4 1st couple down $\frac{3}{4}$ ^{step} 8 round 2nd 3rd couple to bottom floor
- 5-8 Set to cast the - turn set and
- 9-16 1st couple down $\frac{3}{4}$ 2nd 8 9 hp set - turn set and
- 17-24 Down middle - up - cast off
- 25-32 Down - 1st 16

Brechin Javers

Reel.

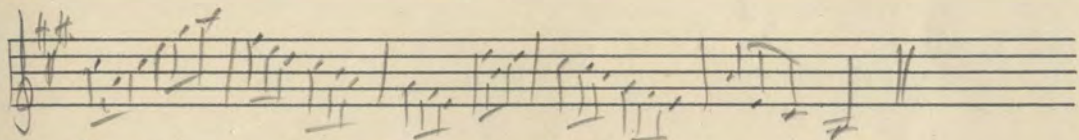
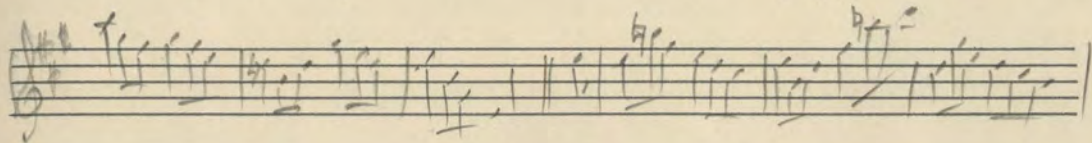
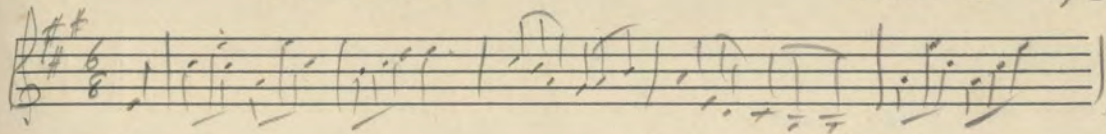
- 1-8 1st couple down the middle. up
- 9-12 1st lady has 2nd man with the 1st 1st man has 2nd lady
up
- 13-16 1st lady up up
- 7mish

17
18
19
20

- 17-24 Reel of 6 across dance
- 25-32 Minuet

B.A. Ladies

- 1-8 1 2 3 couples 54 hands round. back
- 9-12 1st couple lead down with 3rd place 1st 2nd
couple fill in places see 2nd
- 13-16 all sit (2nd couple lead up to 4th 1st with 3rd place
3rd down from place)
- 17-24 1st man 4 hands 2nd couple 1st lady
1st man 2nd lady 3rd man 4th lady
- 25-32 1st man 2nd lady 3rd man 4th lady



Hand all 6 ms - back again

lead on 2 Cup 2^o 2^o jumps

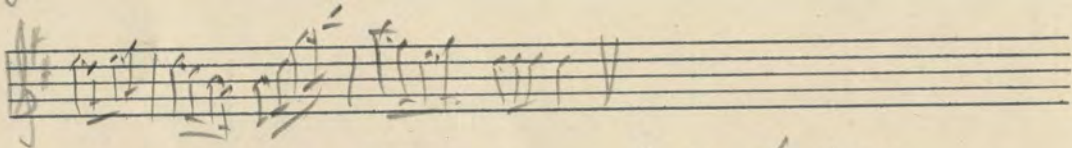
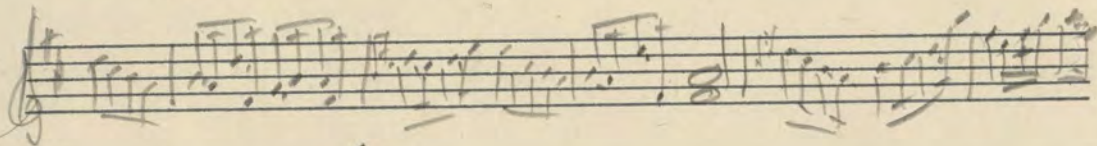
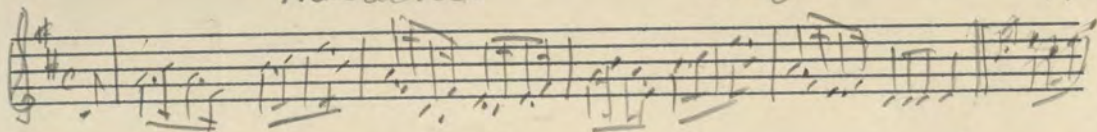
folk in - two part - end off. the hands
 and lead with 3rd cup - his keep with 2nd
 the keep with 3rd and woman hand 3 and 2nd
 his lead his like - by - him

125

7 11 12 cups lead to 2^o - cut up the lines but
 though - cut down - the leader

Granachae

Strand Skilms 1775



1 + 2 cut set - change sides - the same back up -
 back down the middle up again - cast off
 set each cross corners - him
 lead out at the sides

1-8 1-2nd couples set - ^{cross over to other place} change sides set - cross back up
 9-16 1st couple down the middle up again - cast off both partners corners
 17-24 set - him corners
 25-32 a dance - retire - cross over to one side one place down

Winnifred Star Reel

1-8 1st couple 4 heads round - back with 2nd lady
finish 1 2

9-16 1st couple reel of 3 with 2nd woman

17-32 Same with 2nd man

33-40 1st couple down the middle - up

41-48 ~~Pennell~~

X

Taxport Beauty

Bas 1-8 1st man - 2nd woman in middle - up beam
here on parker at bed & go to on parker

9-16 Admire & select - turn off

17-24 " again & turn parker to on floor

25-32 Primitie

1-8 1st 4 hands road with 2nd couple. cart off

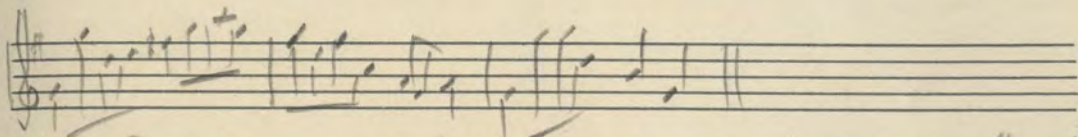
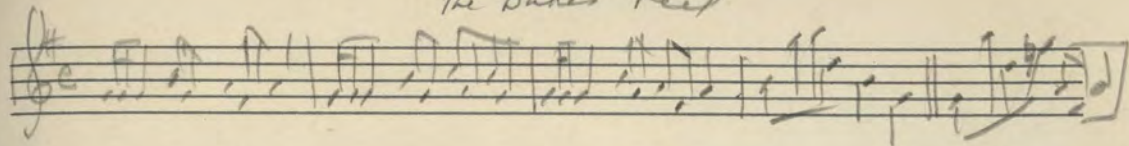
5-8

9-16 Set $\frac{1}{2}$ right - left with 3rd couple ¹⁷⁻²⁴ turn parker to on side

17-24 6 hands road - ~~back~~

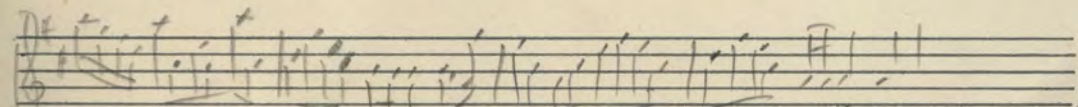
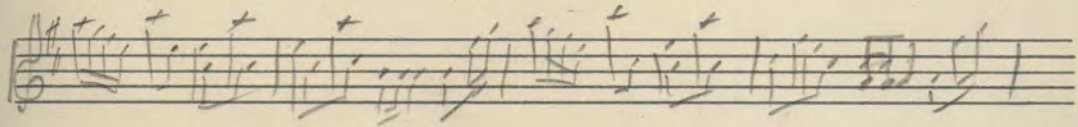
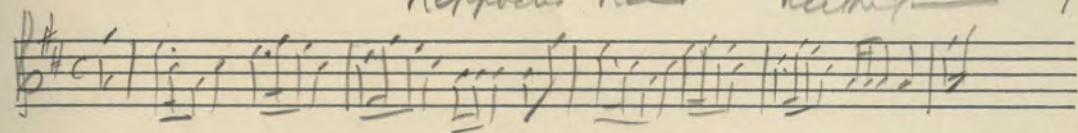
25-32 Turn parker right road by right - by the left

The Duke's Reel



Re 15' - 2' cap hum this pattern half root the side
half root

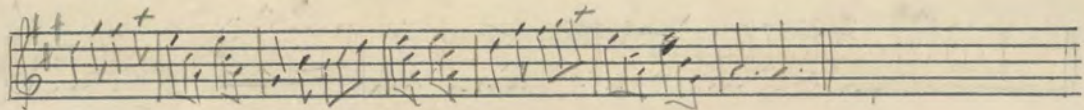
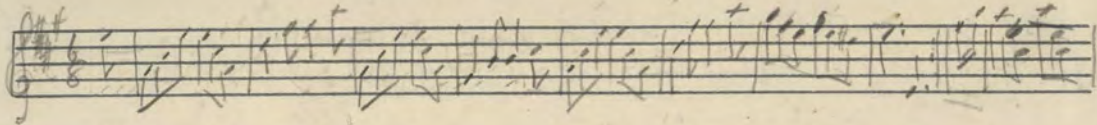
Keppecho Rand Reel 1756



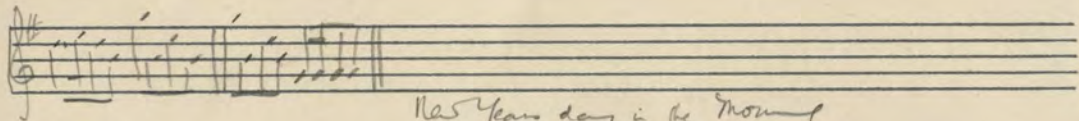
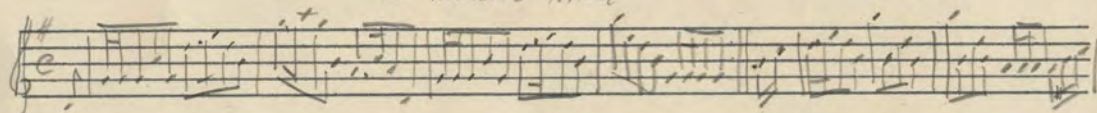
Had 4 all root with 3rd Cap 9 - the same with 3rd Cap
10A d. 1890 - left up at 2nd cut place hum the pattern

Had 4 and 6. In the pattern

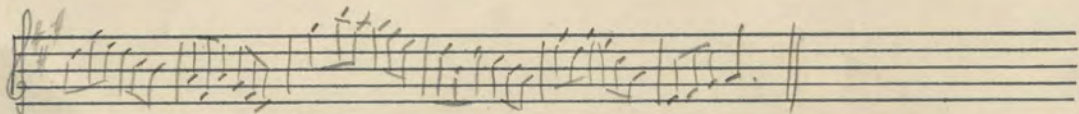
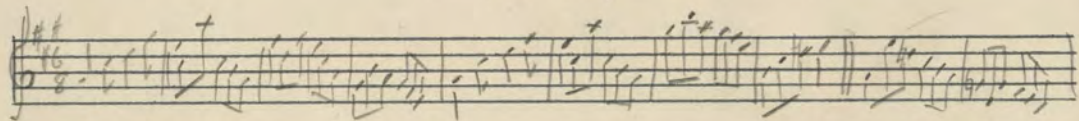
Lat Skunch



The Thatched Home



125 Years day in the Month



Yes

Circle 0' in the lane out

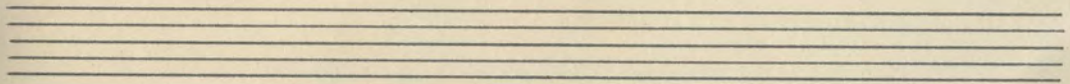
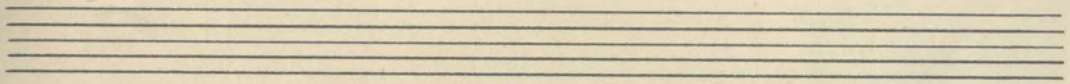
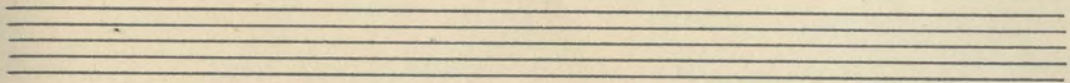
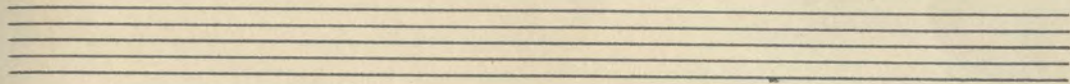
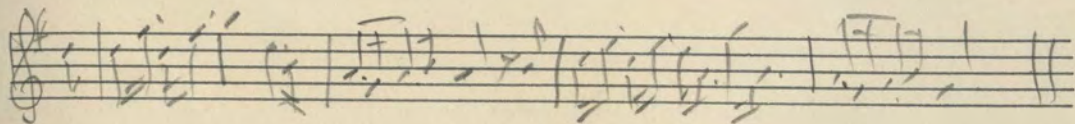
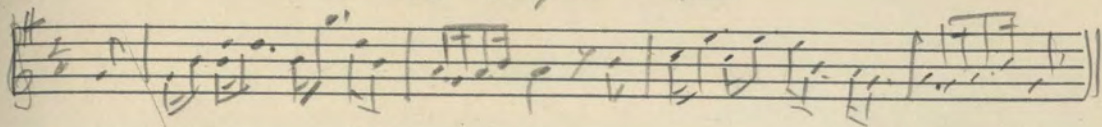
Hubbard

1-16 Hwy looking sides then on your own side
 17 24 cross over 2 cup - lead up to the top. cut
 25 32 Just at corner. here - lead around. here
 83.40

Rob Roy McGregor

Goulding D'Almeida Pottier
 24 down for you ^{CO} 151 9

Kob Ray & Son



The Hon Miss Caroline Lucy Douglas's Polka

Nath. Em

Handwritten musical notation for 'The Hon Miss Caroline Lucy Douglas's Polka'. The piece is written on three staves in treble clef with a common time signature (C). The notation includes various rhythmic values, including eighth and sixteenth notes, and rests. There are several trill ornaments marked with a 't' and a slur over the notes. The music is arranged in a single melodic line.

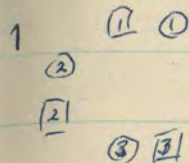
Miss G. Campbell's Bumpkin

Charles Stewart

Handwritten musical notation for 'Miss G. Campbell's Bumpkin'. The piece is written on three staves in treble clef with a common time signature (C). The notation includes various rhythmic values, including eighth and sixteenth notes, and rests. There are several trill ornaments marked with a 't' and a slur over the notes. The music is arranged in a single melodic line. The first staff has a '1st' marking above it, and the second staff has a '2nd' marking above it, indicating first and second endings.

Moulin Dhu.

8 dancers in a square.



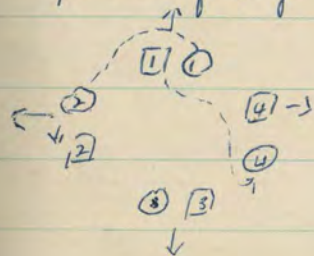
Change places with partners 8 mmp steps - set
(common schlesische) repeat to places pass left shoulders
finish facing corners

Repeat with corners but do last setting in place with
partner

2. While ladies turn round about by right men run in for 8 using
last 4 steps to turn - face partners - all set.
Men run out while ladies run in for 8 - using last 4 steps to
to face each other - set in place for rest of 4 set. While men
turn round in place

3. Ladies dance rest of 4. While men do H. Schlesische steps finish beside
partners all facing outwards

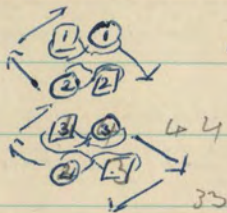
4



Ladies Chain - ladies run 8 steps on to next man
- turn him with left arm for 8. " so back to
place.

Mens chain men passing in front of partner run 8 to next lady
half turn her with 4 (step) - left her back to her place
- so back. (4)

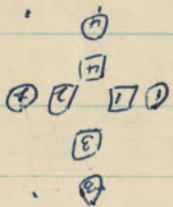
⑤ Face partner ^{PJ}, hands crossed, turn round for 32 steps to finish



Rest of it done Zig Zag

Finish with 32 bars 32 bars to place

6. 8 steps ^{PJ} with hands crossed turn into middle

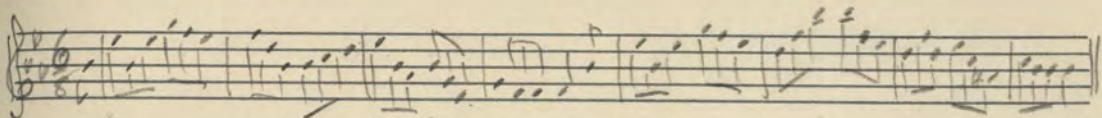


like a wheel on road twice 16 steps
break any with crossed hands turn
in original places (Zigzag - Zigzag)

Collected in N. Irish

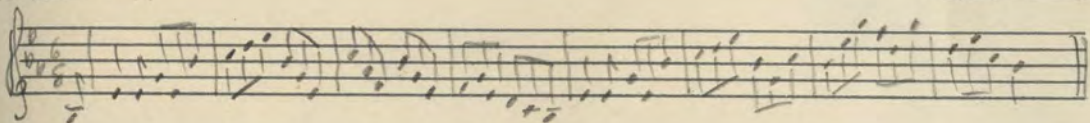
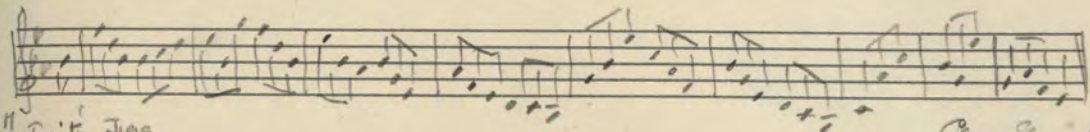
Miss Clark's Double Jiss

Chas. Stewart



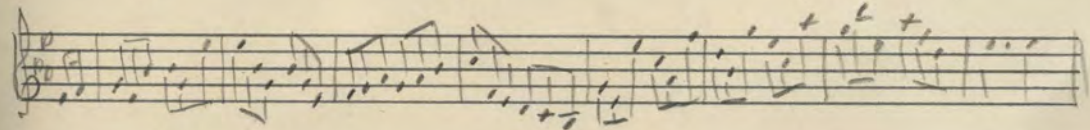
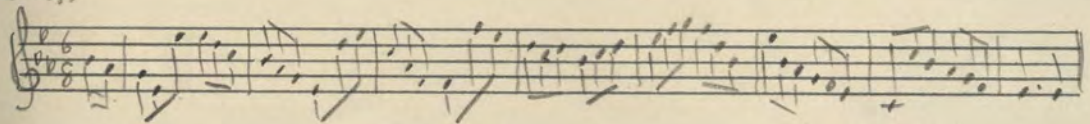
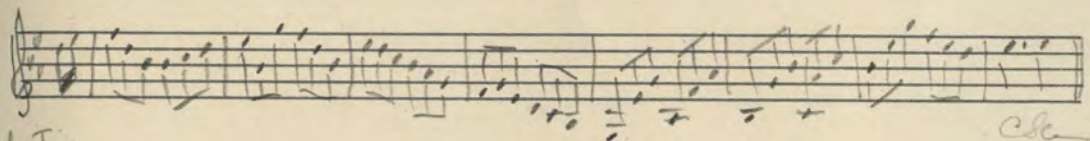
Miss Tait's Jigg

Chas Stewart



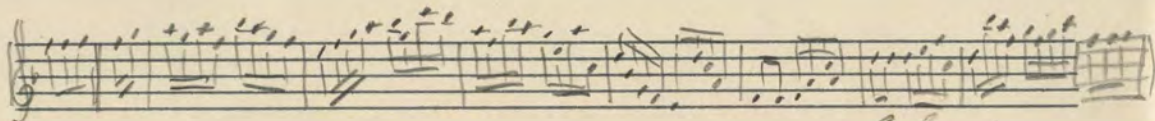
Double Jiss

Chas



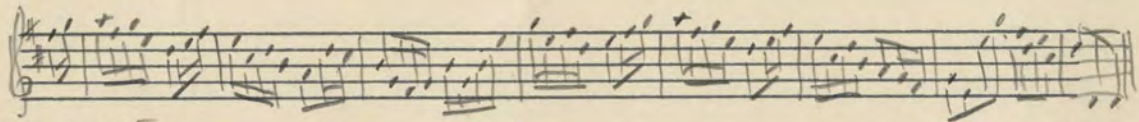
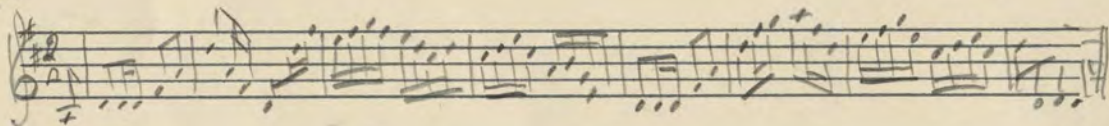
Collection

C. Schubert

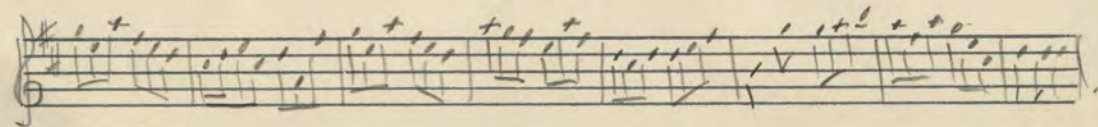
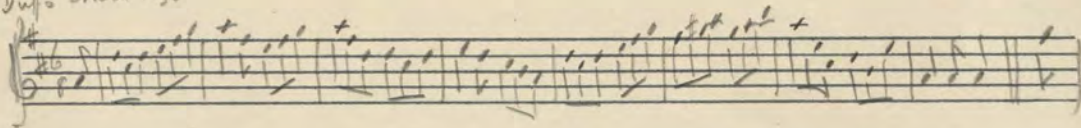


Collection

C. Schubert



Fr. N. Dupis Double Bass



of Adams' rights
as for American girls

(1) wheel - back stairs

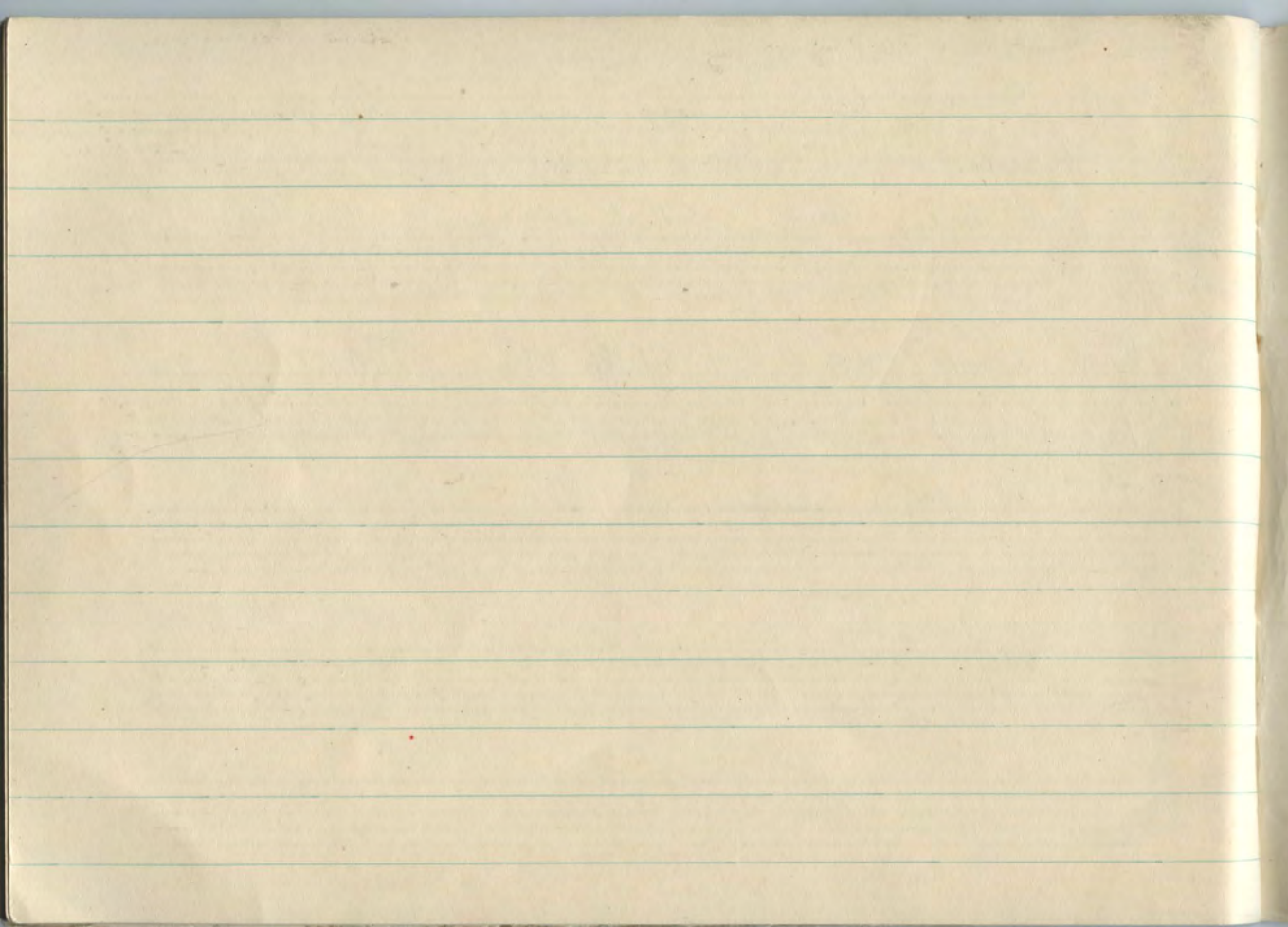
(2) staff ladies chair set to new man - turn left stairs

" " " " " " " " " stairs

(3) men advance 2 steps day set for stairs Pullcock Spring

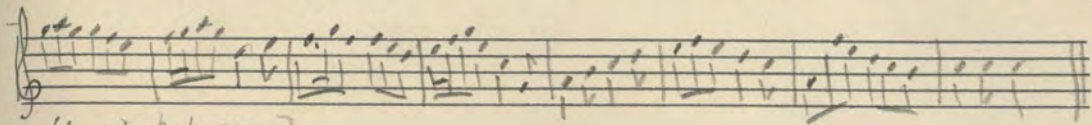
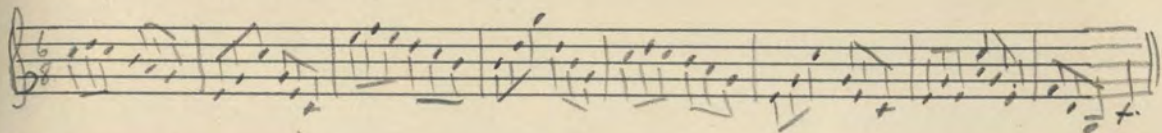
(4) heel of 4

(5) Parsonette on

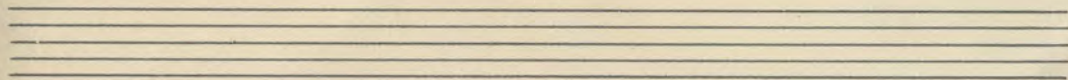
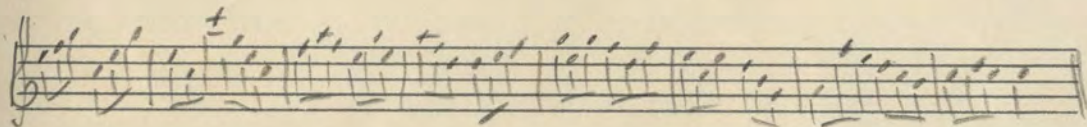
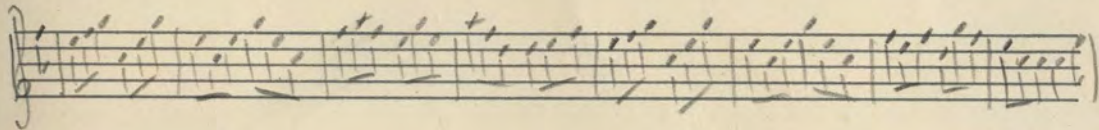
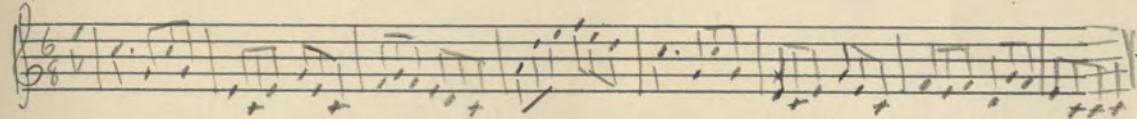


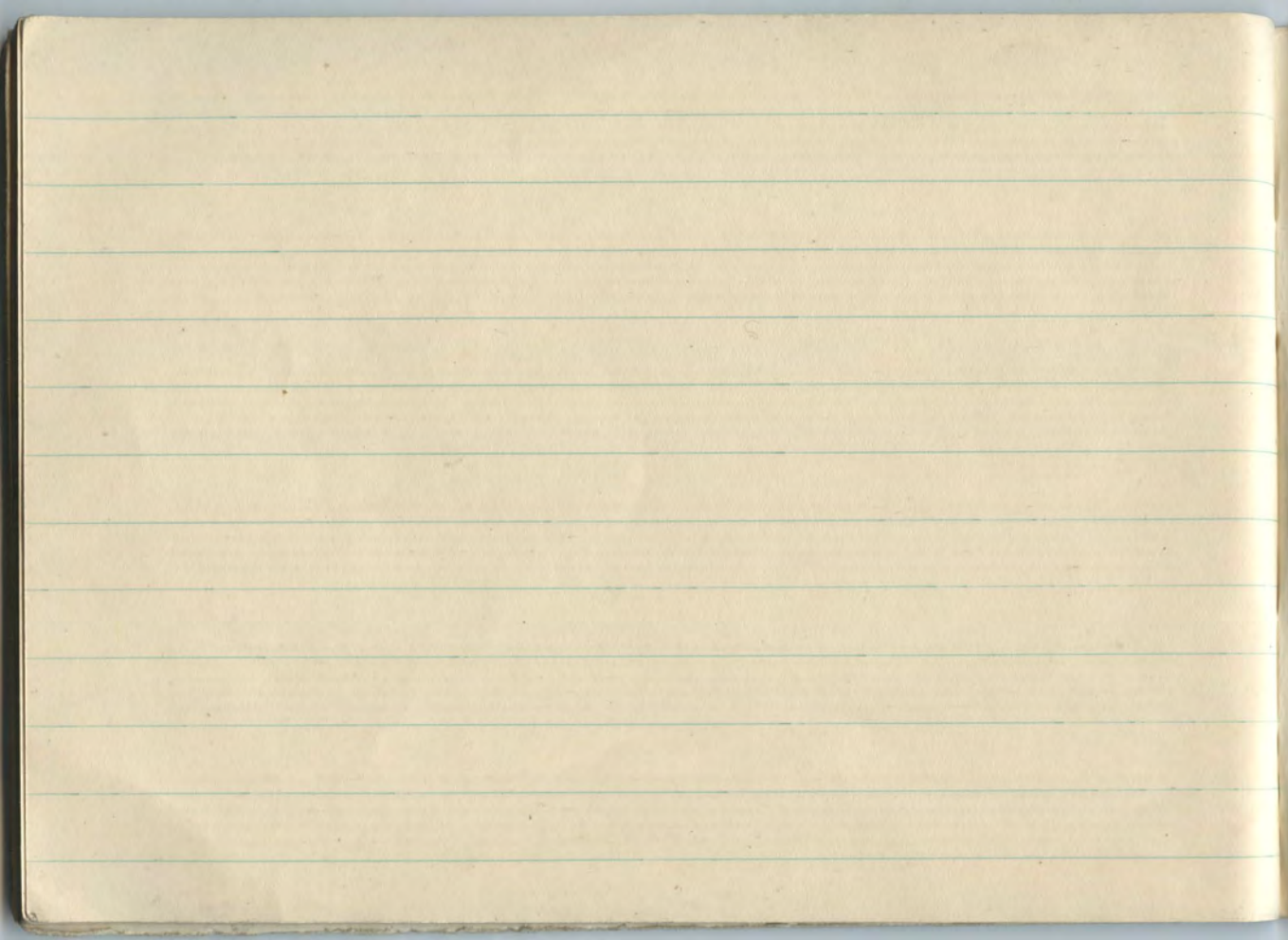
Lady Caroline Montagu's Jigg.

William Bennettman



Lady Elizabeth Montagu's Jigg





Capt. Macken Kes

