

37/118

The 6 - STAVE No. 3

SCHOLASTIC
INTERLEAVED
MANUSCRIPT
MUSIC BOOK

5

PRINTED IN ENGLAND

Sally Tracy
will drive Jack

July Complete Country Dancing Wades 1719

- 1-8 All 4 lead ^{up} forward & back twice
9-12 1st cup set & cast off into 2nd place.
13-16 " " " " 3rd "
17-20 1st woman turns 2^d man & finishes in 2nd place 3rd
21-24 1st man does same with 2nd lady. Wade
25-28 6 hands right round
29-32 all 3 couples large picture with right
I mean to correct on Sunday

- 1-8 All 4 lead forward & back twice then advance & retire
9-16 1st cup set down & cast off. This they do with all couples
13-16 ~~the lead up & place~~ 1st man turns with 2nd woman & finishes
in 2nd place 1st lady does same with 2nd man & lady changes
Circle round all the way 1st cup cast off, all have pictures

July

29-32. all 3 couples ~~set~~, Grand picture —

Lady Belharis's Delect

Handwritten musical score for "Lady Belharis's Delect". The score is written on four systems of two staves each, using a treble and bass clef. The key signature is one sharp (F#) and the time signature is 6/8. The notation includes various rhythmic values, accidentals, and dynamic markings such as "t" and "et".

The first system consists of two staves. The upper staff begins with a treble clef, a key signature of one sharp, and a 6/8 time signature. It contains a melodic line with eighth and sixteenth notes, and some rests marked with "t". The lower staff begins with a bass clef and contains a bass line with eighth and sixteenth notes, also marked with "t".

The second system continues the piece. The upper staff has a treble clef and contains a melodic line with eighth and sixteenth notes, some marked with "t" and "et". The lower staff has a bass clef and contains a bass line with eighth and sixteenth notes, marked with "t" and "et".

The third system continues the piece. The upper staff has a treble clef and contains a melodic line with eighth and sixteenth notes, some marked with "t" and "et". The lower staff has a bass clef and contains a bass line with eighth and sixteenth notes, marked with "t" and "et".

The fourth system continues the piece. The upper staff has a treble clef and contains a melodic line with eighth and sixteenth notes, some marked with "t" and "et". The lower staff has a bass clef and contains a bass line with eighth and sixteenth notes, marked with "t" and "et".

Bretty Polly - *Shelby* Ws

1928

1-4 1st couple. Cash off & turn in front in 2nd place.

5-8 2nd couple do the same

9-12 1st couple clap - cash off into 2nd place

~~13-16~~ 1-2 couples change sides -

13-16 3rd st. - left front ^{2nd man - 2nd woman} turn to main place.

17-24 1st couple east of dance to 2nd wheel right round. 1st with 2nd the 3rd couple

~~25-28~~ Same with 4th front in 3rd place.

29-32 ^{3rd man} ^{2nd woman} ^{1st man} ^{1st woman} ^{2nd man} ^{2nd woman} ^{3rd man} ^{3rd woman} ^{4th man} ^{4th woman} ^{5th man} ^{5th woman} ^{6th man} ^{6th woman} ^{7th man} ^{7th woman} ^{8th man} ^{8th woman} ^{9th man} ^{9th woman} ^{10th man} ^{10th woman} ^{11th man} ^{11th woman} ^{12th man} ^{12th woman} ^{13th man} ^{13th woman} ^{14th man} ^{14th woman} ^{15th man} ^{15th woman} ^{16th man} ^{16th woman} ^{17th man} ^{17th woman} ^{18th man} ^{18th woman} ^{19th man} ^{19th woman} ^{20th man} ^{20th woman} ^{21th man} ^{21th woman} ^{22th man} ^{22th woman} ^{23th man} ^{23th woman} ^{24th man} ^{24th woman} ^{25th man} ^{25th woman} ^{26th man} ^{26th woman} ^{27th man} ^{27th woman} ^{28th man} ^{28th woman} ^{29th man} ^{29th woman} ^{30th man} ^{30th woman} ^{31th man} ^{31th woman} ^{32th man} ^{32th woman} ^{33th man} ^{33th woman} ^{34th man} ^{34th woman} ^{35th man} ^{35th woman} ^{36th man} ^{36th woman} ^{37th man} ^{37th woman} ^{38th man} ^{38th woman} ^{39th man} ^{39th woman} ^{40th man} ^{40th woman} ^{41th man} ^{41th woman} ^{42th man} ^{42th woman} ^{43th man} ^{43th woman} ^{44th man} ^{44th woman} ^{45th man} ^{45th woman} ^{46th man} ^{46th woman} ^{47th man} ^{47th woman} ^{48th man} ^{48th woman} ^{49th man} ^{49th woman} ^{50th man} ^{50th woman} ^{51th man} ^{51th woman} ^{52th man} ^{52th woman} ^{53th man} ^{53th woman} ^{54th man} ^{54th woman} ^{55th man} ^{55th woman} ^{56th man} ^{56th woman} ^{57th man} ^{57th woman} ^{58th man} ^{58th woman} ^{59th man} ^{59th woman} ^{60th man} ^{60th woman} ^{61th man} ^{61th woman} ^{62th man} ^{62th woman} ^{63th man} ^{63th woman} ^{64th man} ^{64th woman} ^{65th man} ^{65th woman} ^{66th man} ^{66th woman} ^{67th man} ^{67th woman} ^{68th man} ^{68th woman} ^{69th man} ^{69th woman} ^{70th man} ^{70th woman} ^{71th man} ^{71th woman} ^{72th man} ^{72th woman} ^{73th man} ^{73th woman} ^{74th man} ^{74th woman} ^{75th man} ^{75th woman} ^{76th man} ^{76th woman} ^{77th man} ^{77th woman} ^{78th man} ^{78th woman} ^{79th man} ^{79th woman} ^{80th man} ^{80th woman} ^{81th man} ^{81th woman} ^{82th man} ^{82th woman} ^{83th man} ^{83th woman} ^{84th man} ^{84th woman} ^{85th man} ^{85th woman} ^{86th man} ^{86th woman} ^{87th man} ^{87th woman} ^{88th man} ^{88th woman} ^{89th man} ^{89th woman} ^{90th man} ^{90th woman} ^{91th man} ^{91th woman} ^{92th man} ^{92th woman} ^{93th man} ^{93th woman} ^{94th man} ^{94th woman} ^{95th man} ^{95th woman} ^{96th man} ^{96th woman} ^{97th man} ^{97th woman} ^{98th man} ^{98th woman} ^{99th man} ^{99th woman} ^{100th man} ^{100th woman}

Mr. Halls Dance 1-4 1st couple slip down the middle to face to 3rd couple. face off st

5-8 1st man lines 3rd w. 2nd 1st w 1st man 3rd man. Slip up to

face 2nd couple (own side) set - 1st woman lines 2nd w 1st man 2nd man

1/2 st. left - turn partner to own side - 1st man - dance up between 2nd of

1st round 2nd man while 1st woman dance - round 3rd woman Then all 3 go in

partner

(Try to get in good char)

X
1928

Miss Forbes

The first system of the handwritten musical score for 'Miss Forbes' consists of two staves. The upper staff is in treble clef with a common time signature (C). It contains six measures of music, primarily composed of eighth and sixteenth notes, with some rests. The lower staff is in bass clef and contains six measures of accompaniment, featuring chords and single notes, with several measures marked with a '+' sign above the staff.

The second system of the handwritten musical score for 'Miss Forbes' consists of two staves. The upper staff is in treble clef with a common time signature (C). It contains six measures of music, primarily composed of eighth and sixteenth notes, with some rests. The lower staff is in bass clef and contains six measures of accompaniment, featuring chords and single notes, with several measures marked with a '+' sign above the staff.

The third system of the handwritten musical score for 'Miss Forbes' consists of two staves. The upper staff is in treble clef with a common time signature (C). It contains six measures of music, primarily composed of eighth and sixteenth notes, with some rests. The lower staff is in bass clef and contains six measures of accompaniment, featuring chords and single notes, with several measures marked with a '+' sign above the staff.

First - show



1-8 New partner both at & cast off him again. out of -

9-16 1-2 couples advance then him partner & finish on long side

~~1-8 couples~~ 1 man 2d ^{at} ~~from~~ him change places 1st man - 2d man same - all
his in original places

25-32

?

Well House Reel

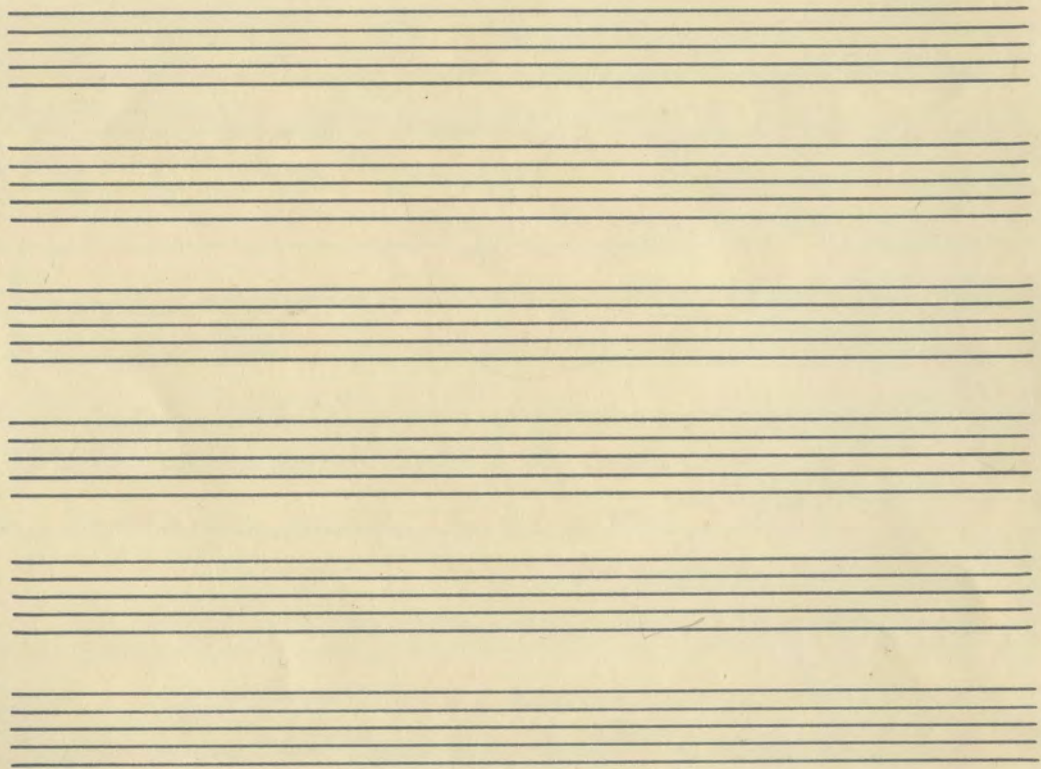
1-4 1+2 couples ahead of or on back position ~~repeated~~ [2] [1] [1] [2]

5-8 1st couple ^{two partners} cross into 2nd place ^{2d cup slip up} & both couples turn back

9-16 Repeat 2nd Cap. lead -

17-24 1-2 couples clap hands with partner They him partner 1st cups ahead
Cast off & 2d cups lead up the middle

x82. 1st cup clap hands with 3rd couple him partner turn side
1st couple dance thro' 3rd cap - finish in 2nd place



all alive Mrs. Pills Dams

1st up set - cast off & do 2 row 4 with 2nd couple

1-4 1st cups slip down middle to face 3d cup, [1] [2] [3] 1 set

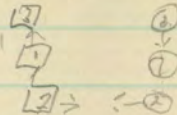
58 Turn person face - from 1st couple ready to slip up in

9-16 same with 2nd cup but 1st couple face over side & front at top

17-24 ~~2nd left all work from ready for~~
~~2nd left all work from ready for~~

31-24 ~~1st set of cups~~ & lead up & cast off 2nd couple
 Curves into to place on own side

25-32 Grand chain



✓ up

Hybridus bedding - Shulky

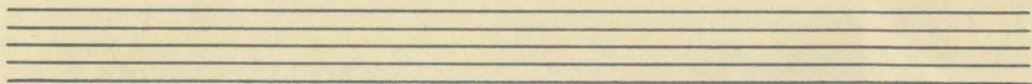
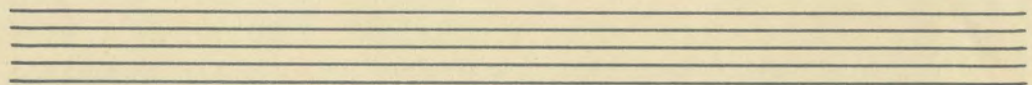
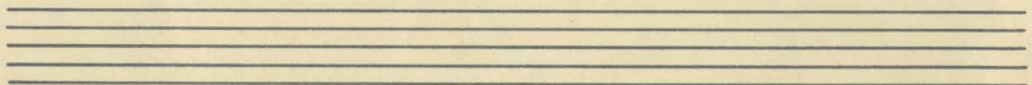
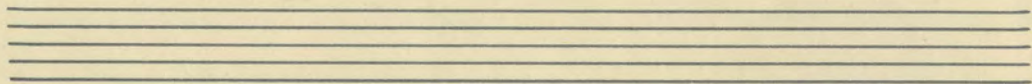
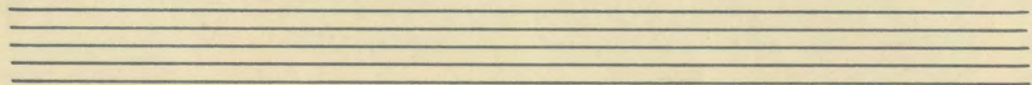
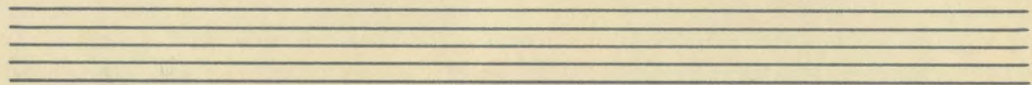
1-4 1st row 2nd woman does same cast dir to row places (face out)

58 1 row " row do the same -

9-16 1 2 3 cups Grid chain half row - all set twice

17-24 Repeat 9-16 back to places

25-32 1st chain made for 2 set then lead up - cast off



Mr Shells Done

Keel Jcs

✓ 1-14 1st cable slips down middle man places plume to face 3rd man
Mr faces 3rd woman - ^{turns with 2nd} ~~all 4 set~~ turn lady turns man with left

58 1st couple turn the one by face with 12 parts & finish ^{2nd ends slip up} in line of 4 feet
cable ready to slip at keel with 2nd couple

9-16 repeat 1-4 with 2nd couple ~~turn from 2 faces down side~~ 1st is back 2nd is
1st man 2nd man set

13-16 Set. turn finish back to right places

17-24 2nd st. left the beam hurn to one side changing places

17-24 1st couple turn with the set & lady does down and 3rd & shells turn
man does up and 2nd man finish on 2nd side ^{man}

25-32 End Chain

17-24
17-24
17-24

17-24
17-24
17-24

Sally Jane

$\frac{1}{8}$ 1st couple getting down for 4 then up. Cork into 2nd place

$\frac{9}{16}$ but into 2nd couple

$\frac{17}{32}$ 6 hands round & back

25-32 1st couple lead up to by Cork - all 3 in position

Colchester C.D. 1750

The Joyful Dance

Stand as in La Tempete.

①① ②②

③④ ⑤⑥

Ladies Chair across & back - then corners
do same all set & in position
each 4 hands round

Then turn by changing places.

Clotter C.D.

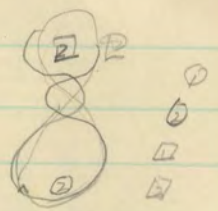
Top couple turn in the center - each off a couple - set in middle
of set into line bet & turn off partners 2 ladies chair. Right
& up promenade

R. Gillies Colchester

Maquer's 2 ↓
~~Stamps~~ Family

Shirley Kay

1-4 1st man casts off 1 while 2nd woman casts up
5 8 1st woman casts up 1 while 2nd man casts down



✓ 9-16 Rec 2/4 across the dance

17 24 1st couple ^{Repeat 17, 24 with 3rd couple} turn the do rec of 4 with 3rd couple front in 2nd place
25 32 1st 3rd couples set twice - 1st couple casts & turn partners

?
Enano Jy.

1-4 1st man - 2nd woman set, turn

✓ 5 8 1st couple cast off

9-16 1st woman - 2nd man do the same 2nd couple cast off

17 24 1-2 couple back to back with partners then men back to back w. do

25 32 1st couple dance for 7 8 and 2nd couple - cast off again

The Land Speakes 20 CD of the year 1793

1-8 1st couple cross on down road 3 couple lead up middle
East of

9-16 1st couple done well of 4 with 2nd couple

17-24 " " " " 3rd " "

25-32 6 birds road & back

The Thrush

1-8 half ~~present~~ population found on my side in 2nd place

9-16 Advance - retire

17-24 6 birds road & back pushing & backed forth long
ready for 3rd couple forward

Sally Fancy Yes

1-8 1st cup gallop down 1 cup up - cont same with 3rd couple

9-16 6 hands round back

17. 24 ~~All 3rd couple set to partner~~ 1st cup lead to Wp set - cont 1/1

all 3rd set to partner

25-37 1 + 2. right - left

Yes

The Highway main Cattedonia + D

1-4 1st man coats of partner from

5-8 body turn & return to place partner following

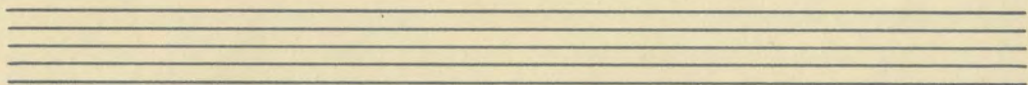
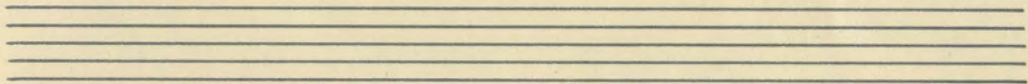
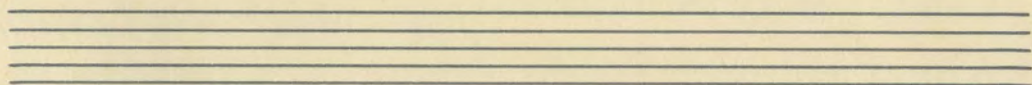
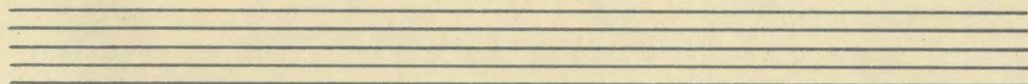
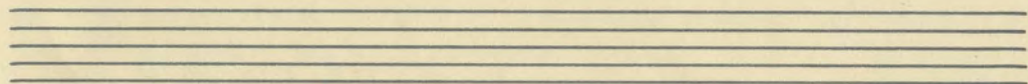
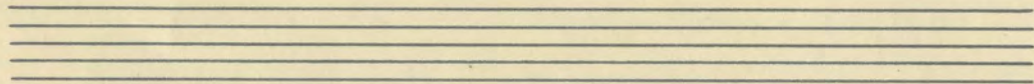
9-12 1st woman back to back with 2nd man 1st man do same w. 2nd woman

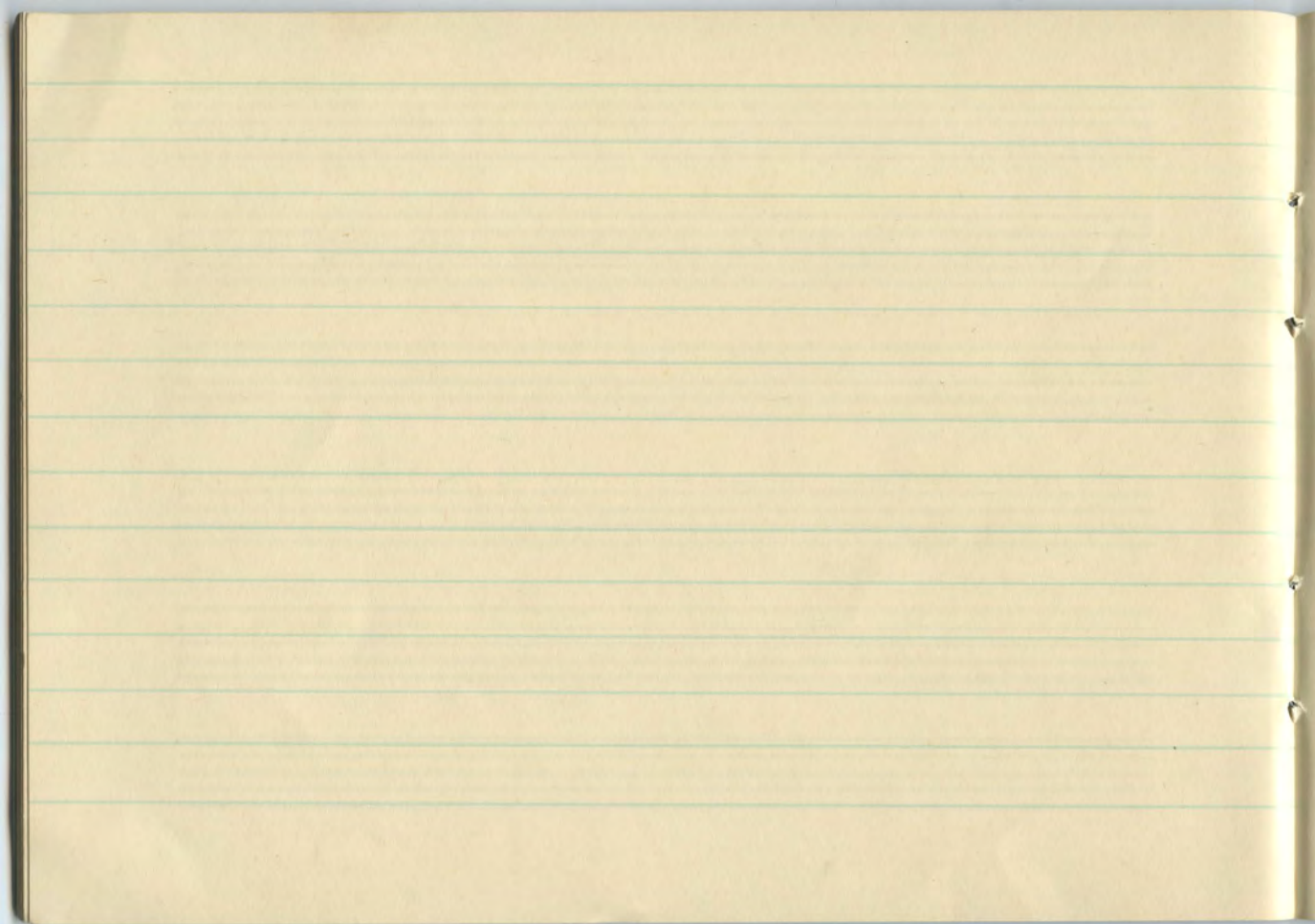
13-16 1st couple back to back.

17. 24 4 hands base & back

25-37 2+2 half right - left then turn partner & finish back in 2nd place

Rutherford C D 1760





A. WEEKES & CO. LTD. LONDON.